



DANGER


This technical notice requires immediate attention. Failure to read this technical notice and to take immediate steps to comply with its recommendations may lead to serious injury or possibly death.

REFERENCE NUMBER:	HMT-0175-00-E
SUBJECT:	Immediate inspection and maintenance requirements for Hydro Mobile bridges
EFFECTIVE DATE:	July 2016
APPLICABLE SERIES:	M Series
APPLICABLE SERIAL NUMBERS:	See hereafter

In the process of investigating recent incidents involving bearing bridge applications achieved with Hydro Mobile equipment, it was decided to reiterate the crucial importance of proper inspection and maintenance procedures of bridges, specifically older bridges showing signs of excessive rust on the bottom steel chords around the link plate attachment areas. Investigation results have shown that in at least two cases, due to improper or lack of inspection and maintenance, the steel chords on the bottom of the bridge sections in the link plate attachment areas were irreparably damaged by excessive rust, causing failure of the bridge section.

Hydro Mobile bridges are designed to be the most robust platforms on the market and as such, perform successfully over extended periods of operational time. It is however imperative to monitor their condition. Although there were no serious injuries or fatalities in the incidents mentioned above, the potential for them still remains.

As part of an ongoing effort to verify equipment condition and guarantee safety in the field, Hydro Mobile requires that all bridges 10 years old or more be immediately submitted to a proper visual inspection. Use the list included in the following pages as a guide to identify any bridge requiring immediate inspection.

	Hydro Mobile requires that all bridges 10 years old or more be immediately submitted to a proper visual inspection . Failure to comply can lead to equipment damage and serious injury, even death.
---	--

DUTY OF CARE

It is the responsibility of the equipment owner to make sure that the inspection procedure is carried out by qualified personnel and according to the recommended inspection schedule, and that inspection records are kept. This "duty of care" is clearly underlined under OSHA, ANSI A92.9 and the Hydro Mobile owner's manuals.

OSHA

5(a)1: Each employer shall furnish to each of his employees employment and a place of employment which are free from recognized hazards that are causing or are likely to cause death or serious physical harm to his employees."

1926.451(f)(3): Scaffolds and scaffold components must be inspected for visible defects by the competent person before each work shift AND after any occurrence which could affect a scaffold's structural integrity.

1926.451(f)(4): Any part of a scaffold damaged/weakened so that strength is below that required must be immediately repaired, replaced, braced to meet strength requirements or removed from service until repaired.

ANSI A92.9

7.4.4 Maintenance

The owner of a MCWP shall arrange that the maintenance specified in this Standard is properly performed on a timely basis by a qualified person. The owner shall establish a preventive maintenance program in accordance with the manufacturer's recommendations and based on the environment and severity of use of the MCWP. The owner shall arrange that frequent and annual inspections are performed. All malfunctions and problems noted shall be corrected before the MCWP is returned to service.

7.4.5 Frequent inspection

The owner of a MCWP shall cause a FREQUENT INSPECTION to be performed on the MCWP:

- a) That has been in service for three (3) months.
- b) That has been out of service for a period longer than three (3) months.

The inspection shall be made by a person qualified on the specific make and model of the MCWP. The inspection shall include all items specified by the manufacturer for a FREQUENT INSPECTION and shall include but not be limited to the following:

- a) All functions and their controls for speed(s), smoothness, and limits of motion.
- b) Emergency lowering means.
- c) All chain and cable mechanisms for adjustment and worn or damaged parts.
- d) All emergency and safety devices.
- e) Lubrication of all moving parts, as specified by the manufacturer.
- f) Visual inspection of structural components and other critical components such as fasteners, pins, shafts, locking devices, bolts, nuts, and tie assemblies.
- g) Placards, warnings, and control markings.
- h) Items specified by the manufacturer.
- i) Correction of all malfunctions and problems identified and further inspection if necessary, before continuing use.

7.4.6 Annual inspection

The owner of a MCWP shall cause an ANNUAL INSPECTION to be performed on the MCWP no later than thirteen (13) months from the date of the prior annual inspection.

The inspection shall be made by a person qualified on the specific make and model of the MCWP. The inspection shall include all items specified by the manufacturer for an ANNUAL INSPECTION.

APPROPRIATE INSPECTION AND MAINTENANCE

As underlined in owner's manuals for Hydro Mobile equipment, the owner must make sure that all the scheduled inspection and maintenance operations have been effectively carried out in a timely manner according to the inspection and maintenance schedules recommended in order to ensure operational safety and avoid failures.

Investigation of the equipment involved in the incidents mentioned previously, raised some concerns about the execution and documentation of the required inspection and maintenance operations.

In order to help you revise your operating procedures accordingly, Hydro Mobile reminds you that equipment must be submitted to daily (or before every working shift) and weekly inspection operations, as well as frequent and annual inspections. Records of these inspections must be kept on file for warranty and safety purposes.

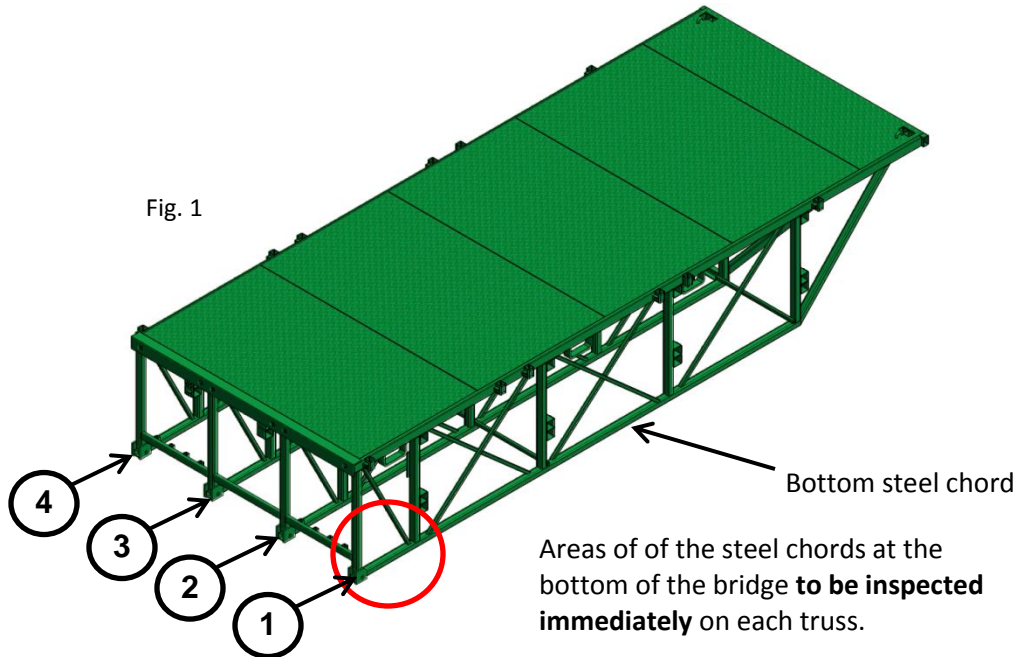
STORAGE OF BRIDGES

Before storing a bridge, the structure must be cleaned thoroughly. Any corrosive agent used on the job or to clean the bridge must be neutralized properly before storing the bridge. The bridge **must be stored on dunnage or cribbing to prevent water damage.**

For information about the immediate inspection requirements, refer to the following pages.

IMMEDIATE INSPECTION REQUIREMENTS for HYDRO MOBILE BRIDGES

It is important to refer to the list of serial numbers included in this notice to help identify each bridge requiring immediate inspection.



The bottom chords (4) (see fig. 1 and position "B" in fig. 2) are connected to the link plate bracket assemblies (4). A single link plate assembly is shown in position "A", on fig. 2.



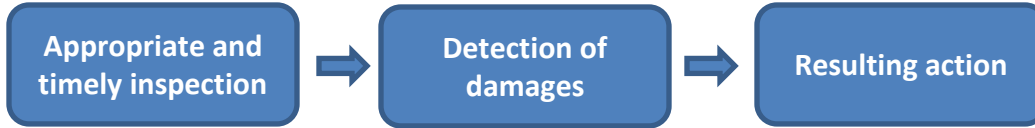
Fig. 2



Fig. 3

As seen in fig. 3, the lack of appropriate inspection and maintenance over a prolonged period can prevent the detection of signs of excessive rust in the bridge structure, more specifically on the bottom chords in the area close to the link plate assemblies. Excessive rust can eventually lead to a failure of the material, as indicated in fig. 3.

IMMEDIATE INSPECTION REQUIREMENTS for HYDRO MOBILE BRIDGES (cont'd)



Using the list of serial numbers included in the following pages, identify ALL bridges 10 years old or over and arrange for their **IMMEDIATE INSPECTION** upon reception of this technical notice.

The bottom steel chords must be visually inspected in the area close to the link plate assemblies and the second vertical member, as shown in fig. 1, to detect any sign of excessive rust, weld or seam cracks, or flaking.

If any of the bridges inspected show conditions similar to the ones shown in fig. 4 and fig. 5 (below), **THE BRIDGE MUST BE REMOVED FROM SERVICE AND QUARANTINED IMMEDIATELY, PENDING FURTHER INSPECTION.**



Fig. 4

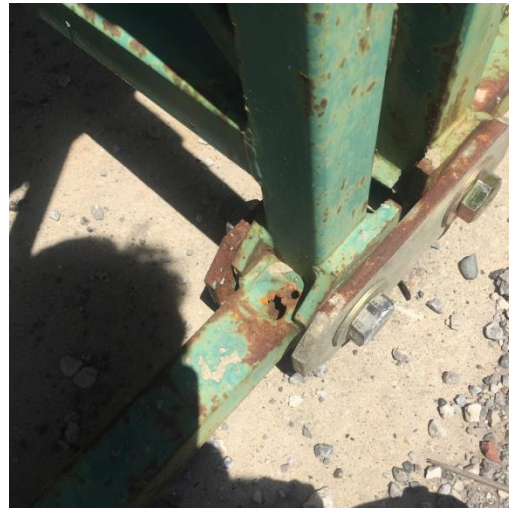



Fig. 5

Use the attached form to identify each bridge – serial number, size and type – required to be held in quarantine. Please forward the completed form to Hydro Mobile no later than 5:00 pm (EDT) on July 15th, 2016. All completed forms must be sent by email to Sony.Trudely@hydro-mobile.com or by fax at (450) 589-0370.

LIST OF BRIDGE SERIAL NUMBERS REQUIRING IMMEDIATE INSPECTION

	BRIDGE TYPE and DESCRIPTION	SERIAL NUMBER EQUAL or PRIOR TO	PRODUCT ID
	02B BRIDGE 2' ASS'Y	7375	M2
	06B BRIDGE 6' ASS'Y	7873	M2
	10B BRIDGE 10' ASS'Y	7623	M2
	10NB BRIDGE 10' INSERT ASS'Y	7722	M2
	14B BRIDGE 14' ASS'Y	7559	M2
	18B BRIDGE 18' ASS'Y	8521	M2
	20B BRIDGE 20' ASS'Y	7443	M2
	EXT02 MULTI PURP INSERT ASS'Y (MPI)	0453	K
	EXT EXTENSION FORWARD 16' KIT	159	

For questions or comments, do not hesitate to contact the team at Hydro Mobile for advice and direction.

To reach Hydro Mobile directly:

1-888-484-9376 (US) or 450-589-8100 (Canada)

To reach our Regional Sales Managers:

Rob Faro

Regional Manager for the Mid-West region

rob.faro@hydro-mobile.com

(724) 705-3480

Steve Kunz

Regional Manager for the South region

steve.kunz@hydro-mobile.com

(678) 551-3433

Gabriel Daigle

Sales Director & Regional Manager for the North east & West Regions. Canada

gabriel.daigle@hydro-mobile.com

(514) 891-6505

General contractors, safety professions and regulators should contact:

Kevin O'Shea, Director of Safety and Training

kevin.oshea@hydro-mobile.com

Equipment owners should contact their local dealer. See the following page for coordinates.

Service Center	Web site	Phone number	State(s)/Province(s) covered
ABC Equipment, Inc.	www.abcequip.com	501-455-2457/1-800-850-8357	AR, LA, MS
Advantage Scaffold & Ladders LLC	www.advantagescaffold.com	763-535-7727	MN
AGF Du-For 3 Rivers QC	www.agfaccess.com	819-691-1928	QC
AGF Du-For Montreal QC	www.agfaccess.com	514-385-1762	QC
AGF Du-For Quebec QC	www.agfaccess.com	418-877-7715	QC
AGF Access Cambridge ON	www.agfaccess.com	519-653-4932	ON
AGF Access Dartmouth NS	www.agfaccess.com	902-463-0101	NS
AGF Access London ON	www.agfaccess.com	519-452-3014	ON
AGF Access Oakville ON	www.agfaccess.com	905-825-0544	ON
AGF Access Rocky Mountain Vancouver	www.agfaccess.com	604-301-1413	BC
AGF Access Rocky Mountain Calgary	www.agfaccess.com	403-276-5888	AB, SK, MB
AGF Access Sarnia ON	www.agfaccess.com	519-336-4710	ON
AGF Access Uxbridge ON	www.agfaccess.com	416-862-5013	ON
Bracing Systems, Inc.	www.bracingsystems.com	630-665-2732	MN, WI, IL, Northern MI, North-East IN
Construction Products & Consultants, Inc.	www.constructionproductssd.com	605-332-4991/1-800-497-3961	SD
Great Lakes Scaffolding	www.greatlakesscaffolding.com	315-415-2646	NY (upstate), PA (N.E.), Western CT, Western MA
Hydro Rents Carolinas (Previously Tesco)	www.hydro-rents.com	843-793-3162	NC, SC
Hydro Rents Colorado	www.hydro-rents.com	303-669-2179	CO
Hydro Rents North West	www.hydro-rents.com	360-896-1170	OR, WA
Hydro Rents Virginia	www.hydro-rents.com	262-644-4447	VA, MD, NC, FL
Integrated Access LLC	www.integratedaccesshi.com	808-682-2068 107	HI
Irwin Products, Inc.	www.irwinproducts.com	314-427-8803	MO, IL, OK, KS
Leppo Equipment	www.leppos.com	1-866-422-2700	OH, MI
Marr Scaffolding Company	www.marrscaffolding.com	617-269-7200	New England
Mid South Equipment Co., Inc.	www.midsouthequipment.com	423-899-1219	TN
Power Pro Equipment	www.powerproequipment.com	717-354-4241/1-800-832-2228	PA (SW), DE, NJ (S)
Service Scaffold Co., Inc.	www.servicesscaffold.com	845-434-8888	NY, NJ (N)
Spec Rents	www.specrents.com	254-784-9244	TX
Structural Materials, Inc.	www.smionline.com	701-282-7100/1-800-437-4776	ND
Swing Stage Equipment Rentals	www.swingstageottawa.ca	613-445-9913	Ottawa-ON
Trowel Trades, Inc.	www.masontools.com	770-271-8825	GA
Universal Scaffold Systems	www.universalscaffold.com	1-800-836-8780	PA (W), WV
Vanguard Manufacturing	www.vanguardscaffolding.com	1-800-624-5000	ME, MA, NH, RI

