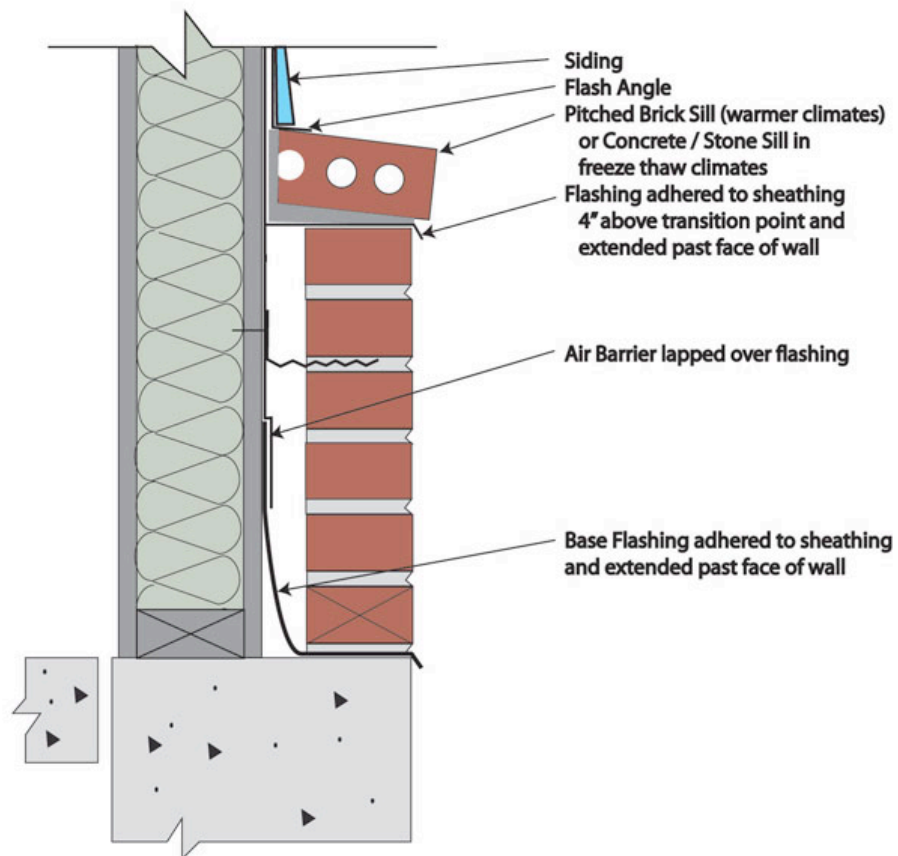


Detailing Brick Veneer to Siding Transitions

By: Jason Yana, Staff Architect

After this question was recently asked of me, I realized that this topic is not so well covered in our industry literature. When we have a brick veneer over a wood frame and the designer chooses to have a wall begin with a brick veneer at the base and then transition to another material such as wood or vinyl siding, the uppermost course of brick should be detailed with the same consideration as a window sill.



Much like a window detail, we are concerned that water that drains down the outer face of the siding will collect at the transition point where the brick begins. When we detail a window sill, we use a sloped sill unit or a brick rowlock course (only in warm climates without freeze thaw cycles). Flashing should be installed beneath the coping unit and extend up the face of the backup sheathing at least 4 inches above the transition line. This ensures that although the coping unit will get quite saturated during a rainstorm, the slop makes the water move away from the wall system, and the flashing prevents the water from entering the wall cavity.

Furthermore, directly underneath the last piece of siding material, it is prudent to detail a small flashing angle turned up behind the siding to direct any water that may have found its way behind the siding, outward.

If you would like a copy of BIA Technical Note #28 Revised ([click here](#)) - send your business card with a note to :Masonry Advisory Council - 1480 Renaissance Drive, Suite 302 Park Ridge, IL 60068 or call us at 847-297-6704