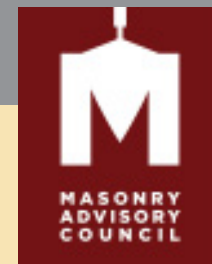


2018



masonryadvisorycouncil.org

Best of Brick



The Kilpatrick Renaissance

Architect: Worn Jerabek Wiltse Architects, P.C.

Supplier: Elston Materials, LLC



Best of Block



Aurora Public Library

Architect: Cordogan Clark & Associates

Mason Contractor: Iwanski Masonry

Supplier: Northfield an Oldcastle Company



Best of Stone



Northwestern University Bienen School of Music

Architect: Goettsch Partners

Mason Contractor: Illinois Masonry Corporation

Supplier: Illinois Brick Company



Craftsmanship



Technical College Prep High School
North Elevation - After



Lane Technical College Prep High School
Architect: Bauer Latoza Studio, SWWB Architects
Mason Contractor: Restore Masonry, LLC
Supplier: Illinois Brick Company, BMI



Best of Housing - Single family



Modern Lakeshore House

Architect: Morgante Wilson

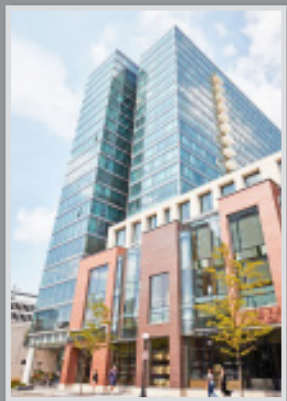
Best of Housing - Single family



Wicker Park Residence

Architect: Wheeler Kearns Architects

Best of Housing – Multi-family



Vantage Oak Park

Architect: Gensler

Mason Contractor: J & E Duff

Supplier: Illinois Brick Company

Best of Health Care / Scientific Research



St Mary's Medical Center

Architect: VOA Associates, Inc

Mason Contractor: Ramcorp, Inc

Supplier: Spec Mix



Providing a forum where contractors, members,
and their representatives discuss matters of concern.



630.396.7153



***Congratulations
Participants and Winners!***

***Thank you for your
continued support and
Building with Masonry.***

INTERNATIONAL UNION OF
BRICKLAYERS AND BAC ADC1 OF ILLINOIS

www.bacadc1.org

Best of Governmental



Chicago Riverwalk Extension

Architect: Ross Barney Architects

Mason Contractor: Garth Construction Services

Supplier: Coldspring, Northfield an Oldcastle Company

Best of Governmental



Glen Ellyn Police Department

Architect: Dewberry

Mason Contractor: Richards & Weyer Construction

Supplier: Northfield an Oldcastle Company, Illinois Brick Company

Best of Industrial / Commercial



Chase Bank

Architect: TAP (The Architects Partnership)

Mason Contractor: Windy City Stone Inc.

Supplier: Illinois Brick Company

Best of Miscellaneous



Coyne Veterinary Center

Architect: Linden Group Architects

Mason Contractor: Kwiatkowski Masonry, Inc.

Supplier: Illinois Brick Company, Northfield an Oldcastle Company

Best of Contemporary Rehab / Restoration



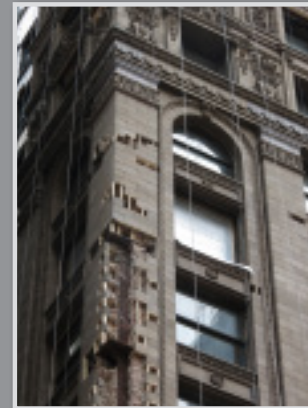
Lane Technical College Prep High School

Architect: Bauer Latoza Studio, SWWB Architects

Mason Contractor: Restore Masonry, LLC

Supplier: Illinois Brick Company, BMI

Best of Contemporary Rehab / Restoration

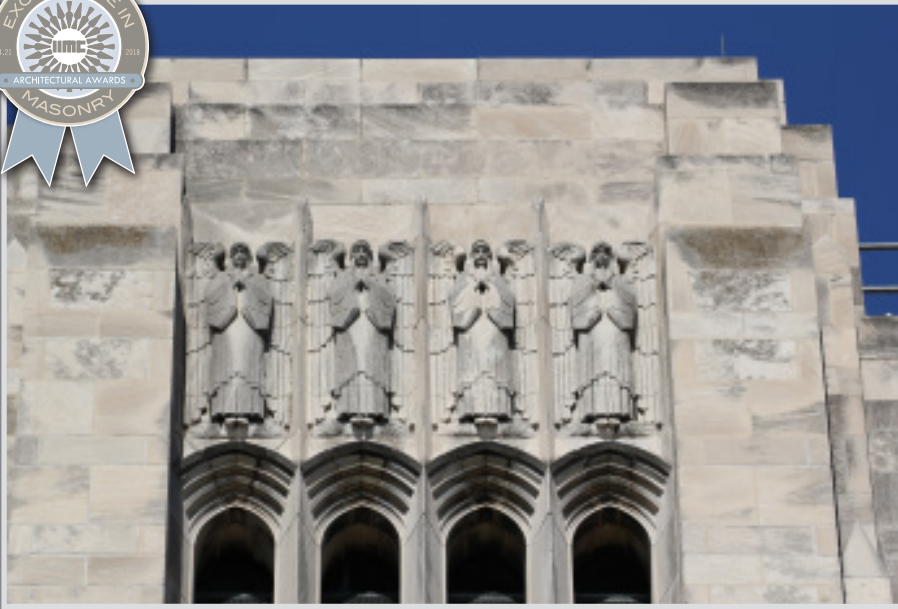


The Kimpton Gray Hotel

Architect: Wiss, Janney, Elstner Associates, Inc.

Mason Contractor: Central Building & Preservation, L. P.

Best of Religious



Grace Lutheran Church

Architect: Johnson Lasky Kindelin Architects

Mason Contractor: Berglund Construction
Company

Supplier: SPEC MIX - Mortar,
Illinois Brick Company

Best of Religious



University of St. Mary's of The Lake Refectory Improvements

Architect: Thomas Norman Rajkovich Architects, LTD

Mason Contractor: Illinois Masonry Corporation

Supplier: Illinois Brick Company, BMI

Best of Educational – Elementary - New



Robert J. Richardson Middle School

Architect: STR Partners LLC

Mason Contractor: ALL Masonry

Supplier: Rauch Clay Sales Corporation

Best of Educational – Elementary Addition/Renovation



PBC Canty Elementary School Annex

Architect: Harding Partners

Mason Contractor: Illinois Masonry Corporation

Supplier: Illinois Brick Company, BMI

Best of Educational – High School – New



Hall High School

Architect: Healy Bender Architects

Mason Contractor: Jimmy Z Masonry Corporation

Supplier: Northfield an Oldcastle Company, Spec Mix

Best of Educational – High School Addition/Renovation



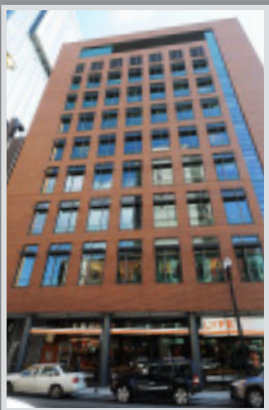
Glenbard West High School Expansion

Architect: Legat Architects

Mason Contractor: Iwanski Masonry

Supplier: Illinois Brick Company, BMI

Best of Educational – College – New



Loyola Quinlan School of Business

Architect: Solomon Cordwell Buenz

Mason Contractor: Illinois Masonry
Corporation

Supplier: BMI, Spec Mix

**Congratulations
on all our Excellent entries!**



1440 Renaissance Drive #340

Park Ridge, IL 60068

847-297-6704

masonryadvisorycouncil.org

Additional Entry Submissions

Barrington Village Center

Architect: HKM Architects and Planners
Mason Contractor: A. Horn, Inc.
Supplier: Illinois Brick Company, BMI



Joliet Township High School Student Center

Architect: Wight & Company
Mason Contractor: A-One Group Ltd.
Supplier: Contractors Material, BMI



167 Erie Street

Architect: Loewenberg Architects
Mason Contractor: Illinois Masonry
Corporation



New Lenox Police Station

Architect: FGM Architects
Mason Contractor: Richards & Weyer Construction Co., Inc.
Supplier: Illinois Brick Company, BMI, Northfield an Oldcastle Company



Additional Entry Submissions

Capital One Cafe

Architect: Interior Architects

Mason Contractor: A.Horn Inc.

Supplier: Rauch Clay Sales Corporation



Ellsworth and Virginia Hill Welcome Center

Architect: Cordogan Clark & Associates

Mason Contractor: Iwanski-Pyzik Masonry & Builders



Limestone Court

Architect: Michael Buss Architects, Ltd.



Rockford Park District - New Concessions Building

Architect: Larson & Darby Group

Mason Contractor: Diamond Masonry of Illinois



Additional Entry Submissions

Wintrust Bank - Mayfair

Architect: Myefski Architects, Inc.

Mason Contractor: ALL Masonry Construction Co.



St. Peter the Apostle Catholic Parish - New Parish Church

Architect: Jaeger Nickola Kuhlman & Associates, Ltd.

Mason Contractor: A-One Group LTD

Supplier: Illinois Brick Company



Lincoln Elementary School

Architect: Muller+Muller, Ltd.

Mason Contractor: RASCO Mason Contractors, Inc.



Mundelein Village Hall

Architect: Wight & Company

Mason Contractor: Midwest Masonry

Supplier: Northfield an Oldcastle Company



Additional Entry Submissions

Wells St. Apartments

Architect: Hartshorne Plunkard Architecture
Mason Contractor: Illinois Masonry Corp.
Supplier: Illinois Brick Company



Glen Ellyn SD 41 STEAM/STEM Lab Additions

Architect: FGM Architects
Mason Contractor: Iwanski Masonry & Ramcorp, Inc
Supplier: Illinois Brick Company



28 Kansas

Architect: Linden Group Architects
Mason Contractor: RASCO Mason Contractors, Inc.



Mansueto High School

Architect: Wheeler Kearns Architects
Mason Contractor: Larmco, Northfield an Oldcastle Company



Additional Entry Submissions

Schrum Memorial Middle School

Architect: Arcon Associates, Inc.

Mason Contractor: Midwest Masonry, Inc.

Supplier: Contrators Material, Inc., Illinois Brick Company, Elston Materials



Village of Frankfort Administration Building

Architect: Linden Group Architects

Mason Contractor: RASCO Mason Contractors, Inc.

Supplier: Illinois Brick Company



Oak Park Georgian Landmark

Architect: Morgante Wilson



River Forest Church Addition

Architect: Nevin Hedlund Architects, Inc.

Mason Contractor: Rasco Mason Contractors

Supplier: Northfield an Oldcastle Company



Additional Entry Submissions

Baker Community Center Renovations

Architect: Kluber Architects + Engineers

Mason Contractor: Rasco Mason Contractors



Warren Park Elementary School

Architect: FGM Architects

Mason Contractor: Mastership Construction Co.

Supplier: Illinois Brick Company



Oaklawn Bank & Trust

Architect: Tria Architecture, Inc.

Mason Contractor: Illinois Masonry Corporation



Gelato Greco

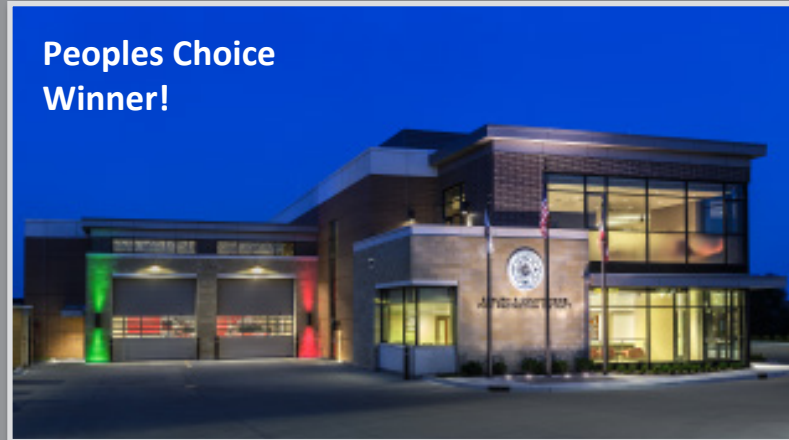
Supplier: Rauch Clay Sales Corp.



Additional Entry Submissions

Elburn & Countryside Fire Protection District Headquarters Station

Architect: FGM Architects
Mason Contractor: J&E Duff Inc.
Supplier: Contractor's Material Inc.



Jose De Diego

Architect: Doyle & Associates
Mason Contractor: ALL Masonry



Southeast Area Elementary School

Architect: SMNG A Ltd.
Mason Contractor: Rasco Masonry
Supplier: Rauch Clay



One Level Luxury Living

Architect: Morgante Wilson



Additional Entry Submissions

IEC Community Center

Architect: Dome Design Build Corporation

Supplier: Rauch Clay Sales Corporation



NorthShore 770

Architect: HKM Architects + Planners, Inc.

Mason Contractor: Midwest Masonry, Inc.

Supplier: Elston Materials, LLC



University of Chicago Laboratory School

Architect: FGM Architects

Mason Contractor: ALL Masonry



Northview School

Architect: Healy|Bender Architects

Mason Contractor: Vissering Construction Company

Supplier: Northfield an Oldcastle Company



Additional Entry Submissions

Walter Payton College Prep Annex

Architect: KOO LLC

Mason Contractor: WBF Construction

Supplier: Illinois Brick Company



Glenview Fire Station No. 6

Architect: Williams Architects

Mason Contractor: Midwest Masonry, Inc.

Supplier: Contractor's Material, Inc.



Portillo's Hot Dogs Restaurant

Architect: Jensen & Jensen Architects, P.C.

Mason Contractor: Titan Masonry Enterprise, Inc.



William Howard Taft High School

Architect: Doyle & Associates

Mason Contractor: IW&G Masonry

Supplier: Illinois Brick Company, BMI



Additional Entry Submissions

Argo Community High School

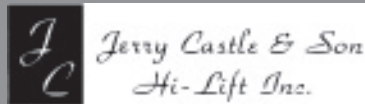
Architect: DLA Architects Ltd.

Mason Contractor: Iwanski Masonry

Supplier: Northfield an Oldcastle Company, Illinois Brick Company, BMI



Thank You to these additional Sponsors:



*From all of us at Illinois Brick Company
Congratulations to the
Excellence in Masonry Award winners*

Where All Your Building Begins

For all your Brick, Stone, Landscape, Masonry and More...



**ILLINOIS BRICK
COMPANY**

illinoisbrick.com

Customer Service 708-237-5600

Bridgeview - Chicago - Des Plaines - Naperville - New Lenox - Schaumburg

other Southfield family companies with locations throughout Illinois and Indiana



THE MASONRY REVOLUTION
STARTS HERE



Whatever your vision, you can see it through with Echelon™, your single-source masonry solution.

As the consolidated brand of masonry products from Oldcastle Architectural, we are advancing a new generation of building products and services. You can integrate the best of both worlds into your projects— the irreplaceable character of masonry along with reliable performance that delivers for years to come.



Northfield
an Oldcastle® company

Discover the next generation of masonry.

EchelonMasonry.com



ECHELON™

© 2018 Oldcastle. All rights reserved. ECH18-251

**CONGRATULATIONS
TO THE MASON CONTRACTORS
WHO AUTOGRAPH THEIR
WORK WITH
EXCELLENCE**



Masonry Advisory Council - Excellence in Masonry
April 21th, Chicago History Museum



WWW.SPECMIX.COM

© 2018 SPEC MIX



Blazing a trail in masonry...

Thank you to all entrants for submitting the many outstanding architectural examples of masonry built in and around the Chicagoland and NW Indiana area.

We Salute You!



**Mason Contractors Association
of Greater Chicago**

MCAGC is the association of, by, and for the Mason Contractors

chicagomasons.org

Bring us your vision.

IMI will make it real.

See how at www.imiweb.org.



International Masonry Institute
17101 Science Drive, Bowie, MD 20715
1-800-IMI-0988 www.imiweb.org



BRICK | STONE | TILE | MARBLE | TERRAZZO | PLASTER | CEMENT | RESTORATION