



What's happening

IN MASONRY



Gary Porter, Executive Director of the Masonry Advisory Council is called upon with questions about construction concerns and for masonry advice from a variety of Architects, Engineers, Contractors, Developers and Distributor sources. He is dedicated to ongoing education of masonry and shares helpful tips from his professional experience that may be beneficial to you.

May 2018

Projecting Brick in Masonry

In the last 6 months, the Masonry Advisory Council has had 5 calls questioning the use of projected brick? Seems like a lot for such a specific request. Is projecting brick OK to design into a masonry face brick wall? After the momentary excitement this causes our tech guy, this may be a movement toward giving traditional masonry a different feeling, creating new interest. As I traverse the Chicago area for my job I have my radar focused on homes and buildings of the past that had projecting face brick, sometimes it is a full brick sometimes just a header. Alternating colors of header bricks was a common design feature for Chicago bungalows, used to create a unique look.



A typical Chicago bungalow with alternating colors of header brick.

In projecting brick there are several items to consider, such as, are the projected brick solid? They should be. If no solid brick are available, it would be best to limit the projection to half the distance from the face of the projecting brick to the holes of the brick. Also, can the brick manufacturer provide a finished face on each plane that will be exposed? This would be great for durability! This is sometimes possible and will add to the cost. Will these brick be a rock climbing wall for the kids of the neighborhood? This might be a factor. Is there any way the roof design may provide additional water shedding ability so less rainwater or snow will sit on the projected brick? Can the cavity air space be maintained for proper water drainage in the cavity?



What's happening

IN MASONRY



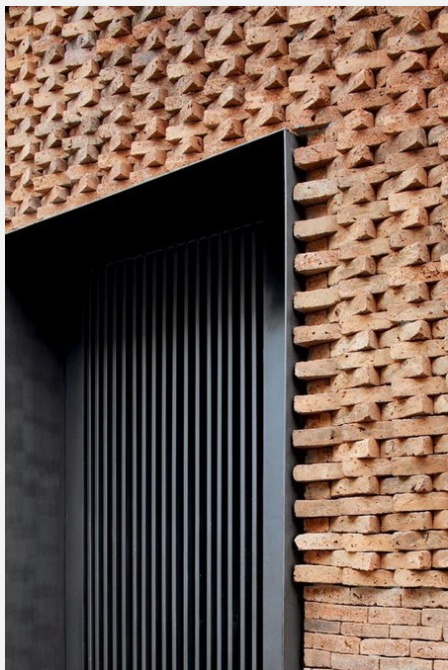
Gary Porter, Executive Director of the Masonry Advisory Council is called upon with questions about construction concerns and for masonry advice from a variety of Architects, Engineers, Contractors, Developers and Distributor sources. He is dedicated to ongoing education of masonry and shares helpful tips from his professional experience that may be beneficial to you.

May 2018

Projecting Brick in Masonry (page 2)



Lots of projection on these brick. A warm & dry climate would add to longevity of this design.



Projecting face brick may be a key for future designs as there are endless ways to project face brick and make a one of a kind statement with masonry on your building.



The Masonry Advisory Council is a non-profit organization that markets and promotes the benefits of building with masonry. Our vast network of industry professionals are available through MAC as a source of education, technical support, promotion, and marketing outreach.

Visit our website masonryadvisorycouncil.org

For immediate support call us at 847-297-6704