

The 2019 Excellence in Masonry Architectural Awards



masonryadvisorycouncil.org

BRICK • BLOCK • STONE



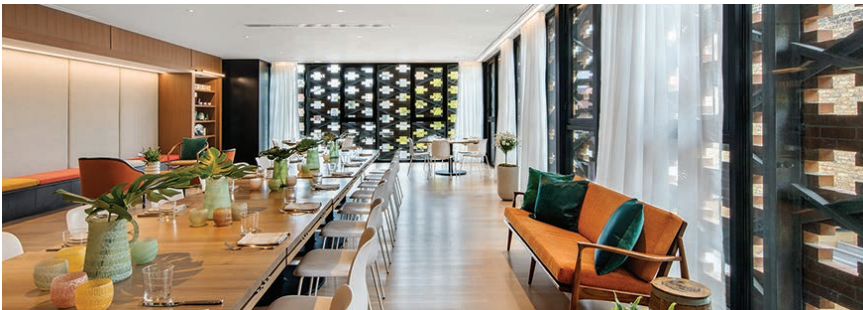
Overall For Design Excellence

Architects Choice -

Tied House

Architect: Gensler

Supplier: BMI Products - Northfield Echelon Masonry



Architects Choice -

PipeFitters Association Fund - Training & Wellness Center

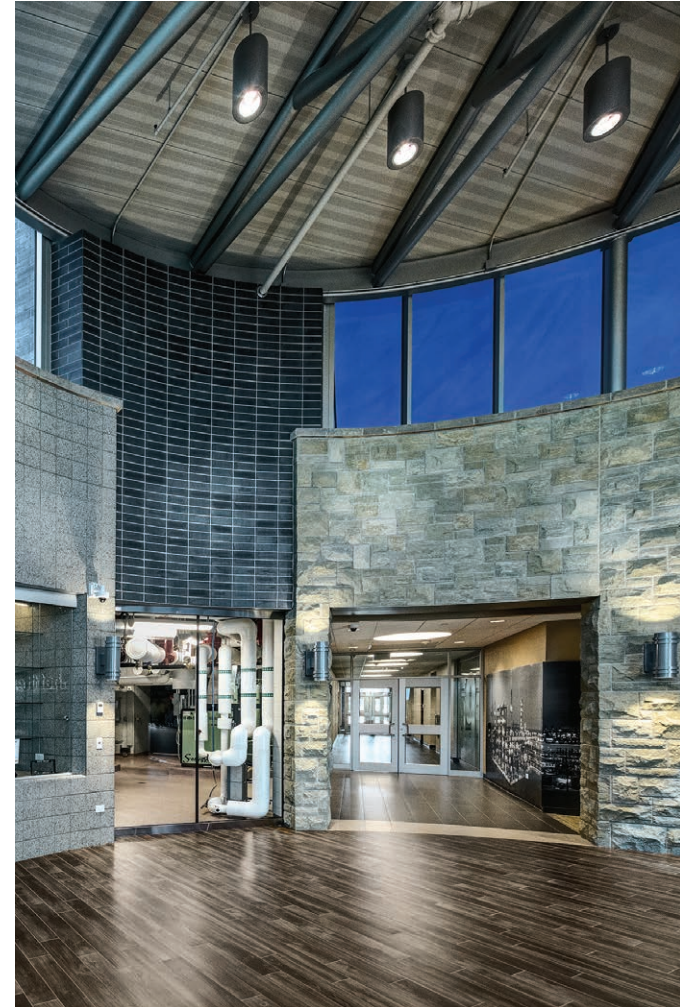
Architect: Arcon Associates, Inc.

Mason Contractor: T&K Masonry, Inc.



Best of Block

Best of Interior





Best of Brick

Best of Health Care/Scientific Research

Belmont Village Senior Living Lincoln Park

Architect: Antunovich Associates, Inc.

Mason Contractor: Midwest Masonry, Inc.

Supplier: BMI Products - Northfield Echelon Masonry - Illinois Brick Company



111 West Chestnut Rowhomes

Architect: Booth Hansen

Mason Contractor: J & E Duff Inc.

Supplier: Northfield Echelon Masonry

Best of Stone





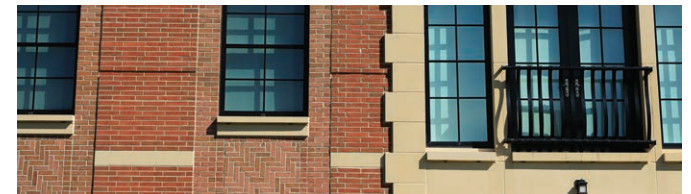
Craftsmanship

Kelmscott Park

Architect: Booth Hansen

Mason Contractor: Richards & Weyer Construction Co., Inc.

Supplier: Northfield Echelon Masonry - Bricks, Inc.





Best of Housing - Single Family

Classic Graystone

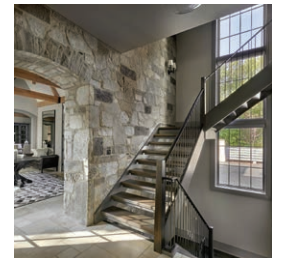
Architect: Morgante Wilson Architects



Best of Housing - Single Family

Transitional European Country Residence

Architect: Charles Vincent George Architects





Best of Housing - Multi-Family

61 East Banks

Architect: Booth Hansen

Mason Contractor: Richards & Weyer Construction Co., Inc.

Supplier: Northfield Echelon Masonry



Best of Governmental

Lockport Fire Station

Architect: FGM Architects Inc.

Mason Contractor: Iwanski Masonry, Inc.

Supplier: CMI - Northfield Echelon Masonry

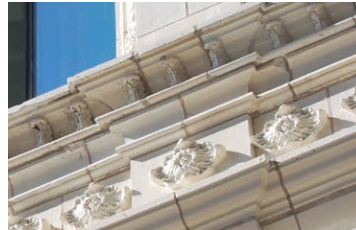




Best of Contemporary Rehab / Restoration

Hotel Julian

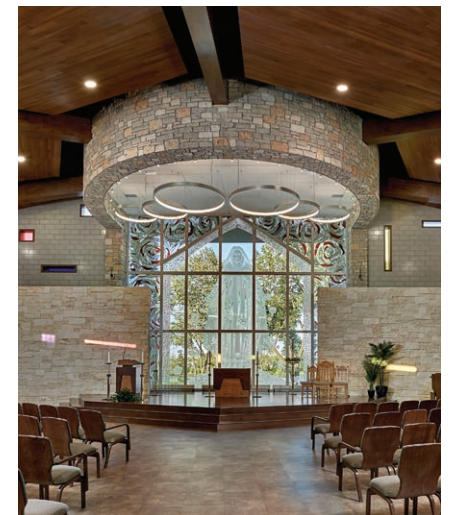
Architect: Hirsch MPG LLC Mason Contractor: Central Building & Preservation L.P. (terracotta) Jimmy Z Masonry Corp. (Brick)
Supplier: Bricks Inc. - Northfield Echelon Masonry



Best of Religious

Society of the Little Flower Campus

Architect: Charles Vincent George Architects
Mason Contractor: Certified Masonry, Inc.
Supplier: Bricks Inc. - Northfield Echelon Masonry



Thank You for submitting your
Excellent Masonry Projects.
Congratulations to All!



1440 Renaissance Drive #340

Park Ridge, IL 60068

847-297-6704

masonryadvisorycouncil.org

buildwithmasonry.com



**Building
Better
Relationships**

LABOR AND MANAGEMENT WORKING TOGETHER
FOR THE BENEFIT OF THE INDUSTRY.

LMCC

LABOR MANAGEMENT COOPERATION COMMITTEE

630.600.3829



Best of Religious - Rehab & Renovation

St. Peter's Church Bell Tower Reconstruction and Repair

Architect: **Wiss, Janney, Elstner Associates, Inc.**

Mason Contractor: **Berglund Construction Company (General Contractor)**

Supplier: **Bricks Inc. - Spec Mix-Quikrete**



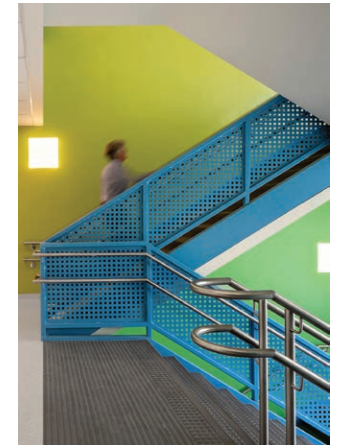
Best of Educational - Elementary

South Loop Elementary School

Architect: **SMNG A Ltd**

Mason Contractor: **Larmco Company**

Supplier: **BMI Products - Rauch Clay Sales**





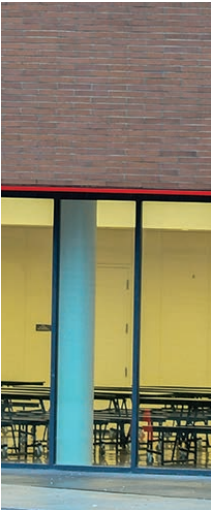
Best of Educational - High School

William H. Taft Freshman Academy

Architect: STL Architects

Mason Contractor: ALL Masonry Construction Company Inc.

Supplier: Bricks, Inc. - General Shale - Building Stone Products



Best of Educational - College

Bruce D. Nesbitt African American Cultural Center

Architect: Interactive Design Architects

Mason Contractor: Kirby & Turner Masonry Inc.

Supplier: Illinois Brick Company - Spec Mix-Quikrete





Best of Educational - College

Seeley G. Mudd Library

Architect: Flad Architects

Mason Contractor: Illinois Masonry Corporation



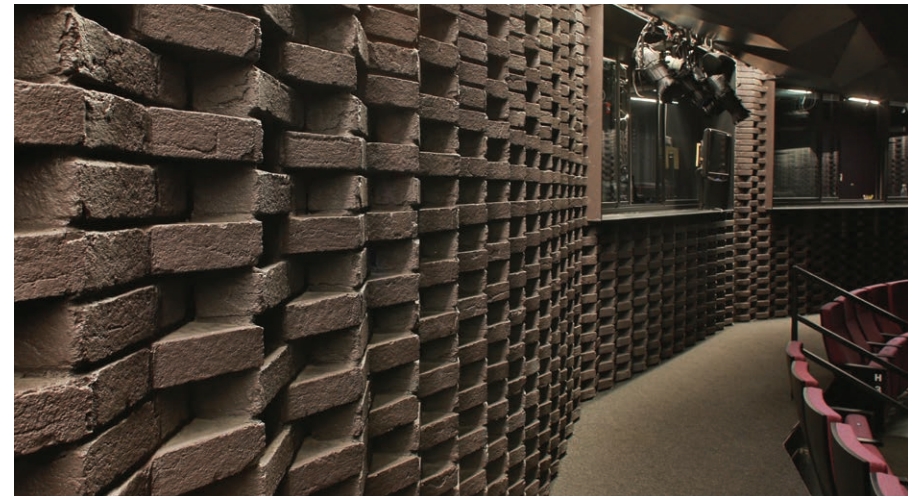
Best of Interior

Writer's Theater

Architect: Studio Gang Architects

Mason Contractor: Mike Cachey Construction Co., Inc.

Supplier: Northfield Echelon Masonry





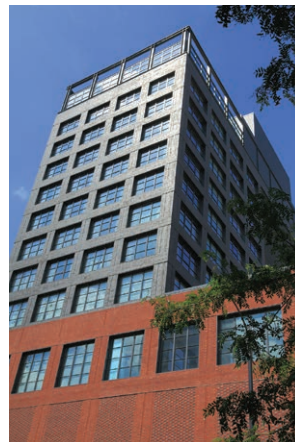
Best of Mixed Use

Hoxton Hotel

Architect: **GREC Architects**

Mason Contractor: **Mike Cachey Construction Co., Inc.**

Supplier: **BMI Products**



Best of Miscellaneous

Illinois State Police Memorial Park

Architect: **Knight E/A, Inc.**

Mason Contractor: **Otto Baum Company, Inc.**

Supplier: **Coldspring**

General Contractor: **R.D. Lawrence Construction**





Best of Multi Family - Townhomes

Calumet Row Townhouses

Architect: Michael J. Leary, Architect

Supplier: Illinois Brick Company



New French Country Home

Architect: Melichar Architects

Project Submissions

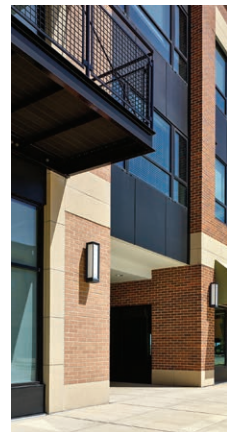


Fields South at Carle at the Fields - Phase 1

Architect: LCM Architects

Mason Contractor: Otto Baum Company, Inc.

Supplier: Illinois Brick Company





INTERNATIONAL UNION OF BRICKLAYERS AND ALLIED CRAFTWORKERS

Congratulations Participants and Winners!

***Thank you for your continued support
and Building with Masonry.***

EXECUTIVE BOARD

JIM ALLEN - PRESIDENT

MIKE LOWERY - SECRETARY TREASURER

HECTOR ARELLANO - EXECUTIVE VICE PRESIDENT

BILL BREHENY - EXECUTIVE VICE PRESIDENT

LOCAL PRESIDENTS

MIKE ERDENBERGER - LOCAL 21

DOUG JOHNSTON - LOCAL 56

DAVE NAPRSTEK - LOCAL 74

City Hall (Chicago)

Architect: **Bauer Latoza Studio**

Mason Contractor: **I.W. & G. Inc.**

Supplier: **BMI Products - Northfield Echelon Masonry**



Valparaiso University New Science Building

Architect: **Hastings & Chivetta Architects**

Mason Contractor: **Kwiatkowski Masonry**

Supplier: **Spec Mix-Quikrete**



Ravine House

Architect: **Robbins Architecture**



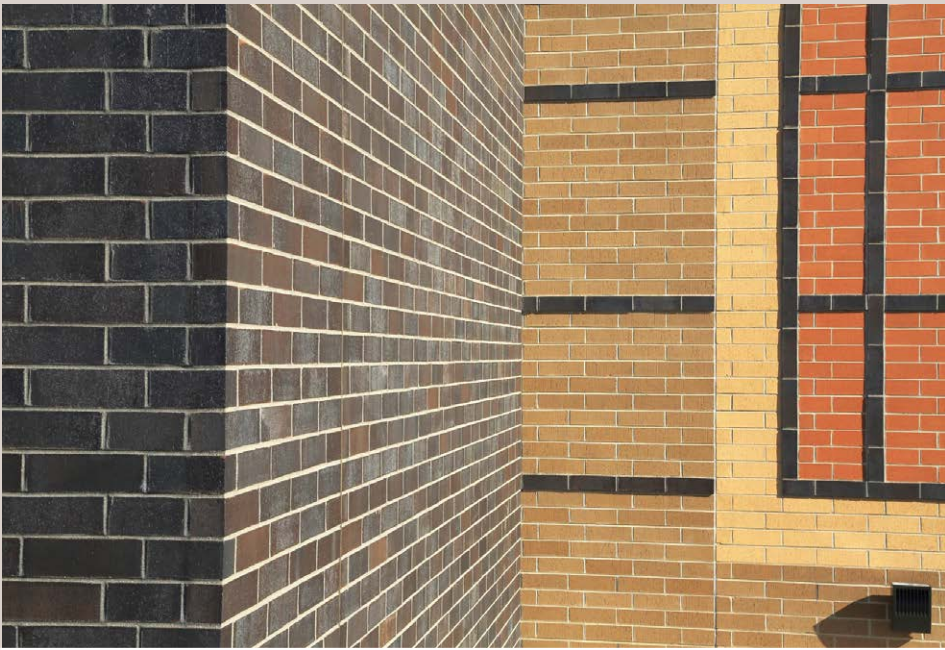
Emme Apartments aka The Haymarket

Architect: **GREC Studio**

Mason Contractor: **Mike Cachey Construction Co., Inc.**

Supplier: **Illinois Brick Company**





***Congratulations
to ALL
Excellence in Masonry Award
Participants!***



**MASON CONTRACTORS ASSOCIATION
OF NORTHWEST INDIANA, INC.**

Byrne Elementary School

Architect: Ileakis Associates

Mason Contractor: WBF Construction Inc.

Supplier: Illinois Brick Company - Spec Mix-Quikrete



St. Peter the Apostle Parish

Architect: Jaeger Nickola Kuhlman & Associates, Ltd.

Mason Contractor: A-One Group, Ltd.

Supplier: Illinois Brick Company



The Farnsworth Residence

Architect: Elisco Design Architects LLC



Joliet MultiModal

Mason Contractor: Mike Cachey Construction Co., Inc.

Supplier: BMI Products



IEC Community Center

Architect: Dome Designers Inc.

Supplier: Rauch Clay Sales



Residence: 2103 North Western

Supplier: Rauch Clay Sales



*From all of us at
Illinois Brick Company*

*Congratulations to the...
Excellence in Masonry Award Winners*

**WHERE ALL YOUR
BUILDING BEGINS**

For all your Brick, Stone, Landscape,
Masonry, Rainscreens and More...



BRIDGEVIEW • CHICAGO • DES PLAINES • NAPERVILLE • NEW LENOX • SCHAUMBURG
Other Southfield family companies with locations throughout Illinois and Indiana

Lake View High School

Mason Contractor: ALL Masonry Construction Company Inc.

Supplier: Illinois Brick Company - Rauch Clay Sales



Start collecting your
projects for our next event.
Excellence in Masonry
Spring 2021.



Masonry Advisory Council

masonryadvisorycouncil.org • buildwithmasonry.com

University of Chicago Charter School Woodlawn Campus

Architect: EC Purdy & Associates
Mason Contractor: MPZ Masonry, Inc.
Supplier: Illinois Brick Company



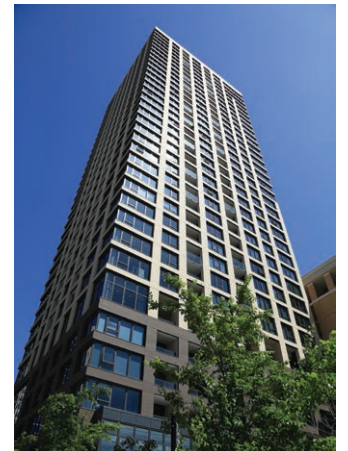
Tudor Manor

Architect: Charles Vincent George Architects



Exhibit On Superior Chicago

Architect: bKL Architecture
Mason Contractor: Illinois Masonry Corp.
Supplier: Northfield Echelon Masonry - Bricks, Inc.



The Old Chicago Post Office

Architect: Gensler
Mason Contractor: Mark 1 Restoration Company
Supplier: Northfield Echelon Masonry - BMI Products - Rauch Clay Sales - Spec Mix-Quikrete

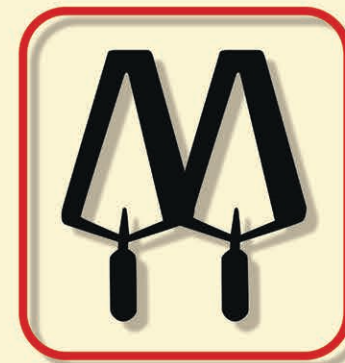




Blazing a trail in masonry...

Thank you to all entrants for submitting the many outstanding architectural examples of masonry built in and around the Chicagoland and NW Indiana area.

We Salute You!



**Mason Contractors Association
of Greater Chicago**

MCAGC is the association of, by, and for the Mason Contractors

chicagomasons.org

Sherlock Elementary School

Mason Contractor: ALL Masonry Construction Company Inc.

Supplier: Illinois Brick Company - General Shale - Building Stone Products - Spec Mix - Quikrete



Montclare Senior Residences SLF of Lawndale

Architect: Worn Jerabek Wiltse Architects, P.C.

Mason Contractor: Dunigan Construction

Supplier: BMI Products - Northfield Echelon Masonry - Illinois Brick Company



McHenry County College Geological Sign

Architect: Dominick Kemper Architects

Mason Contractor: Illinois Masonry Corporation



Spoke Apartments

Architect: FitzGerald

Mason Contractor: Midwest Masonry, Inc.

Supplier: Northfield Echelon Masonry - BMI Products - Illinois Brick Company - Spec Mix - Quikrete



Lake View Building (116 South Michigan) - Exterior Masonry Facade

Architect: **Wiss, Janney, Elstner Associates, Inc.**

Mason Contractor: **Central Building & Preservation, L.P.**



Northwestern Wirtz Center

Mason Contractor: **Mike Cachey Construction Inc**

Supplier: **Northfield Echelon Masonry**



LaPorte High School Performing Arts Center

Mason Contractor: **Kwiatkowski Masonry**

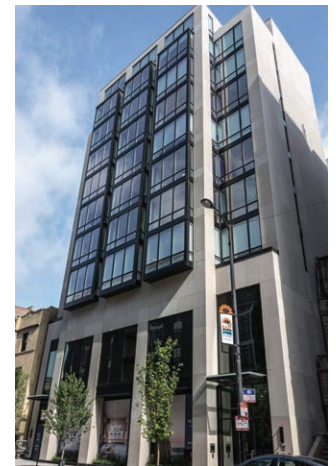
Supplier: **Spec Mix - Quikrete**



508 W Diversey

Architect: **Pappageorge Haymes Partners**

Mason Contractor: **Worldwide Natural Stone & Tile, Inc.**



Centrum Evanston

Architect: Hirsch MPG LLC

Supplier: Illinois Brick Company - Northfield Echelon Masonry

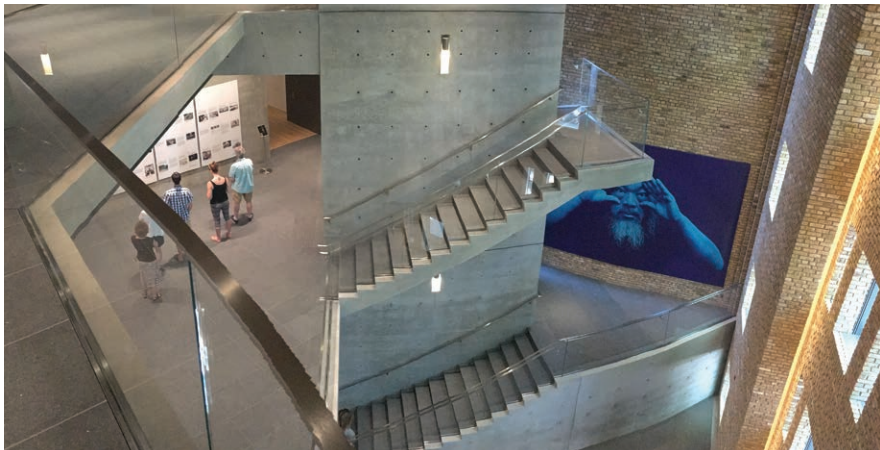


Wrightwood 659 Gallery

Architect: Tadao Ando Architect & Associates

Mason Contractor: Certified Masonry

Supplier: Northfield Echelon Masonry



St. Mary Catholic Church

Architect: Healy, Bender & Associates, Inc.

Mason Contractor: Vissering Construction

Supplier: Northfield Echelon Masonry



The Carrington at Lincolnwood

Architect: Jensen & Halstead, Ltd.

Mason Contractor: Midwest Masonry, Inc.

Supplier: Illinois Brick Company - Northfield Echelon Masonry - Spec Mix - Quikrete



Prairie District Townhomes

Architect: Michael J. Leary - Architect
Supplier: Illinois Brick Company



Albion of Oak Park

Architect: SMNG-A
Mason Contractor: Midwest Masonry, Inc.
Supplier: Rauch Clay Sales - Northfield Echelon Masonry - Spec Mix-Quikrete



Lincoln Park Residence

Architect: Rugo/Raff Architects Ltd.
Supplier: Illinois Brick Company



The Merchandise Mart River Walk Structural Repairs

Architect: Kellermeyer Godfry Hart
Mason Contractor: Berglund Construction Company
Supplier: Rauch Clay Sales - Spec Mix-Quikrete



YOU COULD DESIGN THE NEXT ICONIC MASONRY BUILDING.

Let us help make your vision reality.

The International Masonry Institute provides free technical support and education to architects designing with masonry.

TOGETHER, WE CAN
BUILD SOMETHING GREAT.



**INTERNATIONAL
MASONRY
INSTITUTE**

WWW.IMIWEB.ORG



MASONRY THROUGH AND THROUGH



Congratulations
to all of the architects and
craftsmen that made these
projects "Excellent".



Whatever your vision, you can see it through with Echelon™,
your local single-source masonry solution.

EchelonMasonry.com

